

**PROPOSED NEW
DEVELOPMENT**

REV 8 - 16.05.2019

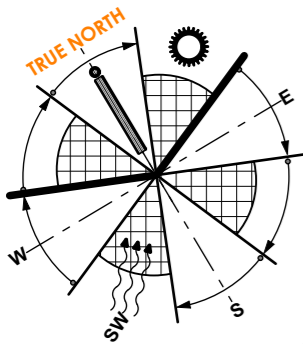
SHAKAS HEAD INDUSTRIAL PARK

WAREHOUSE AREA SCHEDULE						
UNIT NO.	WAREHOUSE AREA (G.F)	RECEPTION/ ABLUTIONS (G.F)	OFFICES/ STORAGE (F.F)	ABLUTIONS (F.F)	PARKING BAYS PROVIDED	TOTAL
UNIT 1	111 m ²	33 m ²	70 m ²	13 m ²	3 BAYS	227 m ²
UNIT 2	110 m ²	32 m ²	61 m ²	13 m ²	3 BAYS	216 m ²
UNIT 3	110 m ²	32 m ²	61 m ²	13 m ²	3 BAYS	216 m ²
UNIT 4	565 m ²	49 m ²	196 m ²	12 m ²	8 BAYS	822 m ²
UNIT 5	569 m ²	49 m ²	168 m ²	12 m ²	8 BAYS	798 m ²
UNIT 6	75 m ²	28 m ²	62 m ²	7 m ²	3 BAYS	172 m ²
UNIT 7a	373 m ²	32 m ²	68 m ²	36 m ²	6 BAYS	509 m ²
UNIT 7b	372 m ²	32 m ²	131 m ²	13 m ²	6 BAYS	548 m ²
UNIT 8	170 m ²	32 m ²	57 m ²	12 m ²	3 BAYS	271 m ²
UNIT 9	162 m ²	41 m ²	103 m ²	12 m ²	3 BAYS	318 m ²
UNIT 10a	365 m ²	35 m ²	64 m ²	13 m ²	5 BAYS	477 m ²
UNIT 10b	364 m ²	35 m ²	64 m ²	13 m ²	5 BAYS	476 m ²
UNIT 11	113 m ²	42 m ²	89 m ²	16 m ²	3 BAYS	260 m ²
UNIT 12	63 m ²	35 m ²	45 m ²	0 m ²	2 BAYS	143 m ²
TOTAL						5 453 m²
ON HOLD						
UNIT 13	362 m ²	45 m ²	128 m ²	17 m ²	-	552 m ²
UNIT 14	360 m ²	45 m ²	104 m ²	17 m ²	-	526 m ²
UNIT 15	360 m ²	45 m ²	104 m ²	17 m ²	-	526 m ²
UNIT 16	362 m ²	45 m ²	130 m ²	17 m ²	-	554 m ²
UNIT 17	90 m ²	10 m ²	30 m ²	0 m ²	-	130 m ²
UNIT 18	117 m ²	10 m ²	56 m ²	0 m ²	-	183 m ²
UNIT 19	142 m ²	10 m ²	42 m ²	0 m ²	-	194 m ²
UNIT 20	142 m ²	10 m ²	42 m ²	0 m ²	-	194 m ²
UNIT 21	142 m ²	10 m ²	42 m ²	0 m ²	-	194 m ²
UNIT 22	142 m ²	10 m ²	42 m ²	0 m ²	-	194 m ²
TOTAL						3 247 m²
TOTAL BUILDING AREA						8 700 m²

TOWN PLANNING INFORMATION		
LOT 1589 AREA		6 818 m ²
ALLOWABLE F.A.R	1.0	6 818 m ²
ALLOWABLE COVERAGE	70%	4 773m ²
LOT 1590 AREA		10 057 m ²
ALLOWABLE F.A.R	1.0	10 057 m ²
ALLOWABLE COVERAGE	70%	7 040m ²
TOTAL SITE AREA		16 875 m²
ALLOWABLE F.A.R	1.0	16 875 m ²
ALLOWABLE COVERAGE	70%	11 813 m ²
PROPOSED NEW COVERAGE (excl. canopies)	45%	7 595 m ²
PROPOSED NEW F.A.R	0.51	8 715 m ²

GUARD HOUSE	15 m ²
METER ROOM	6 m ²
BIN AREA	8 m ²

PARKING BAY SCHEDULE		
TOTAL WAREHOUSE AREA WITH ANCILLARY OFFICES	1 bay/100m ² - 8 700m ²	87 BAYS
TOTAL PARKING BAYS REQUIRED		87 BAYS
TOTAL PARKING BAYS PROVIDED		127 BAYS
OVERFLOW PARKING BAYS		20 BAYS

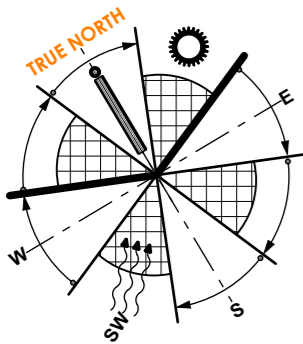


GROUND FLOOR PLAN - SDP
N.T.S.

PROPOSED NEW DEVELOPMENT - ERF 1589 & 1590
SHAKAS HEAD INDUSTRIAL PARK

3018 001 SKETCH PLAN
REV 8 - 16.05.2019





NEW METER ROOM & GUARD HOUSE

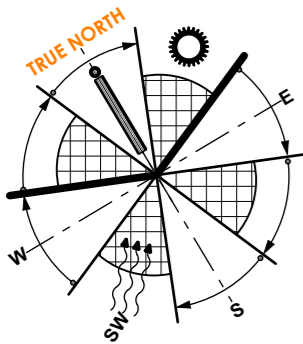


FIRST FLOOR PLAN - SDP
N.T.S.

PROPOSED NEW DEVELOPMENT - ERF 1589 & 1590
SHAKAS HEAD INDUSTRIAL PARK

3018 002 SKETCH PLAN
REV 8 - 16.05.2019





PARKING BAY ALLOCATION	
UNIT NO.	PARKING BAY NUMBERS
UNIT 1	1 - 3
UNIT 2	4 - 6
UNIT 3	7 - 9
UNIT 4	10 - 14, 27 - 29
UNIT 5	15 - 19, 22 - 24
UNIT 6	44 - 46
UNIT 7a	40 - 43, 47 - 48
UNIT 7b	36 - 39, 49 - 50
UNIT 8	55 - 57
UNIT 9	58 - 60
UNIT 10a	25 - 26, 33 - 35
UNIT 10b	20 - 21, 30 - 32
UNIT 11	51 - 52, 61
UNIT 12	53 - 54
VISITORS	V1 - V9



**NICHOL
PROJECTS**

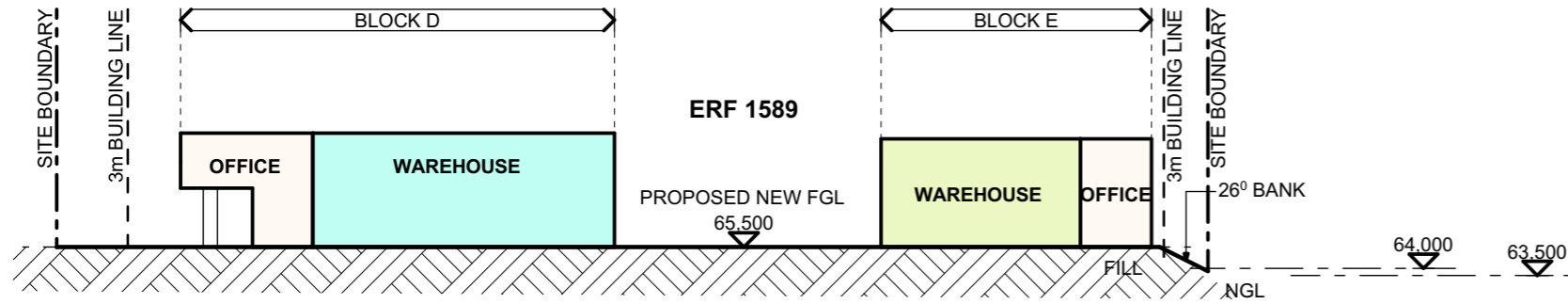
GROUND FLOOR PLAN - PARKING LAYOUT
N.T.S.

PROPOSED NEW DEVELOPMENT - ERF 1589 & 1590
SHAKAS HEAD INDUSTRIAL PARK

3018 003 SKETCH PLAN
REV 8 - 16.05.2019

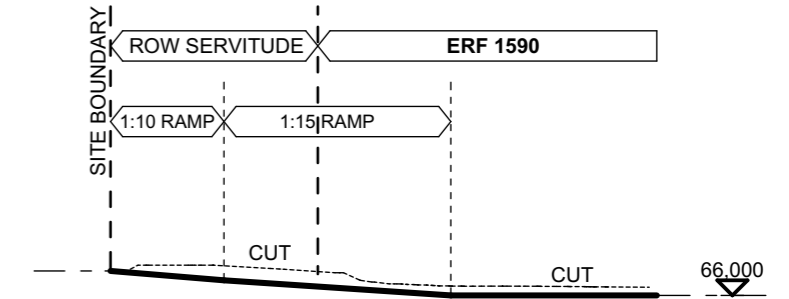
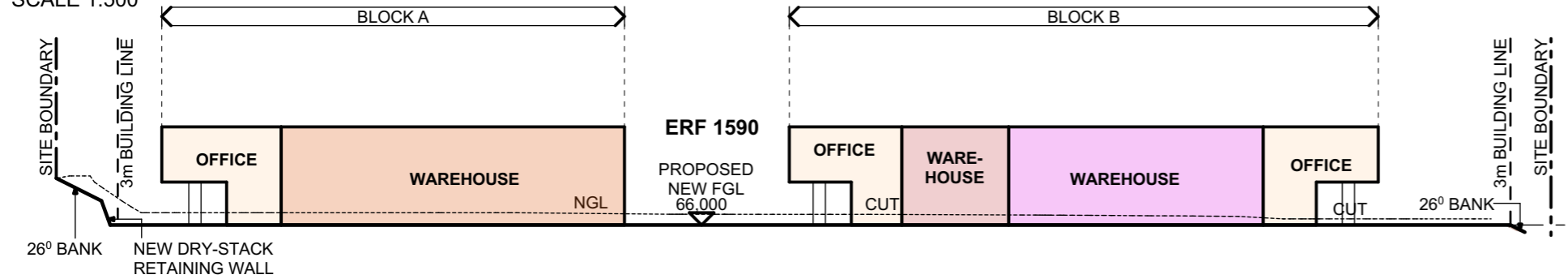


www.avidarchitecture.co.za



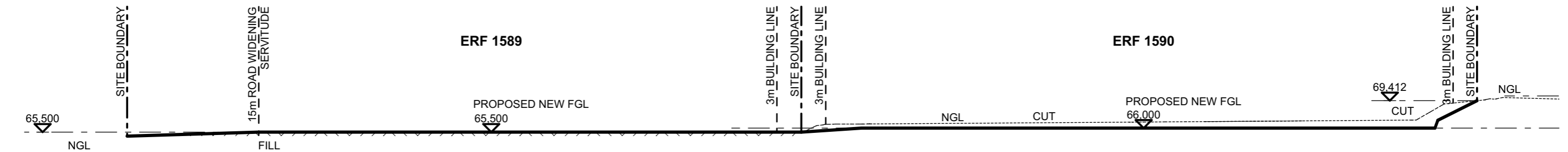
SECTION A - A

SCALE 1:500



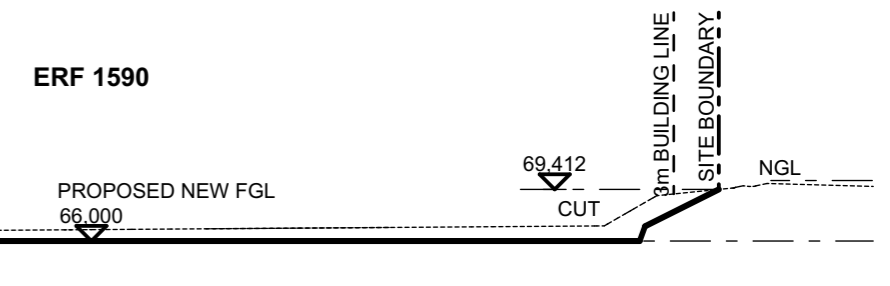
SECTION B - B

SCALE 1:500



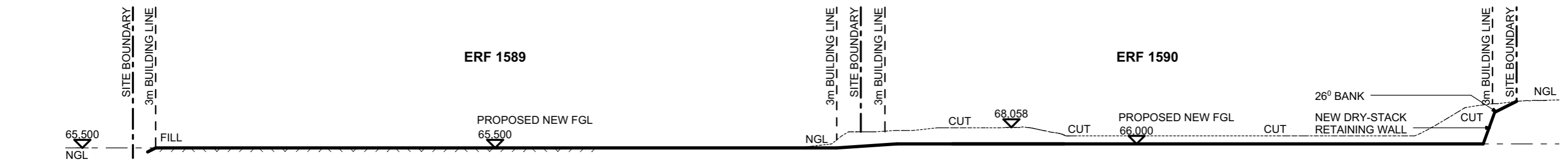
SECTION E - E - DRIVEWAY SECTION

SCALE 1:500



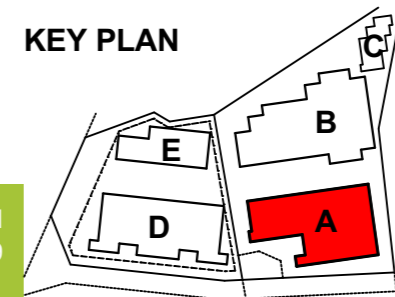
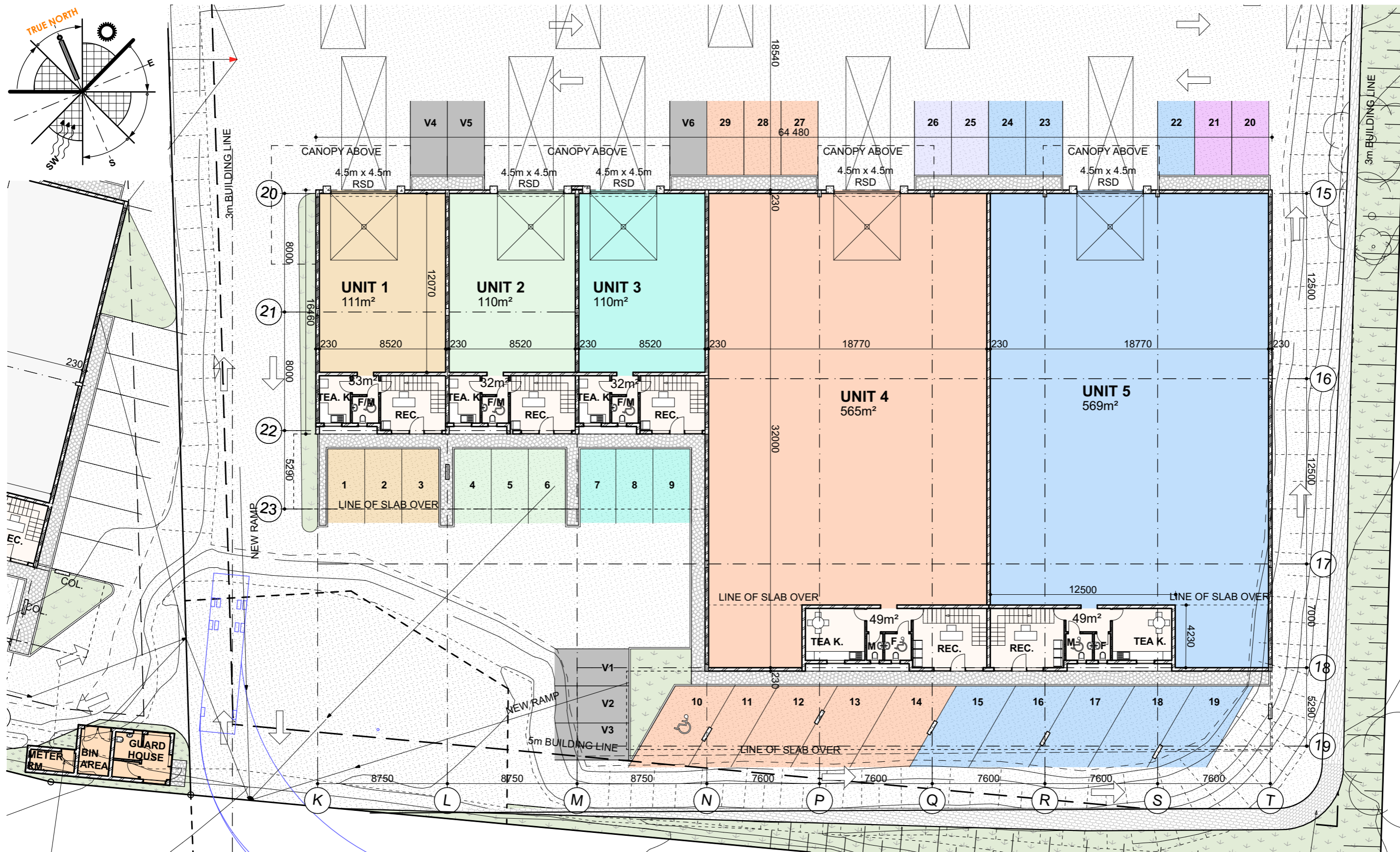
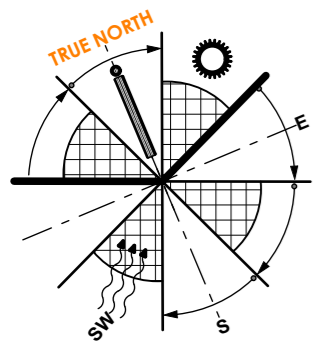
SECTION C - C

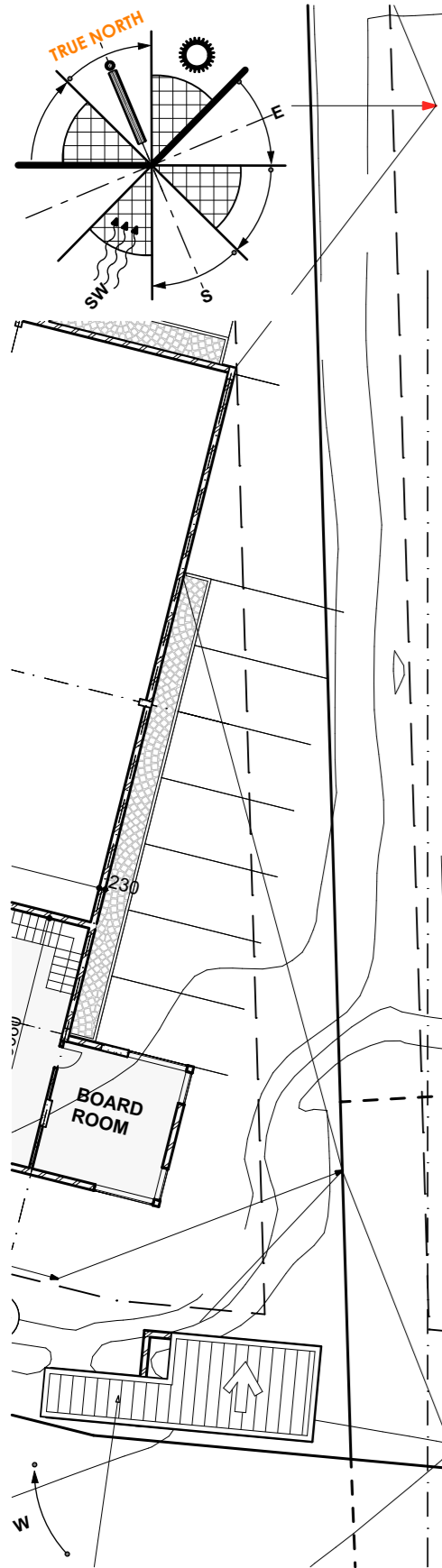
SCALE 1:500



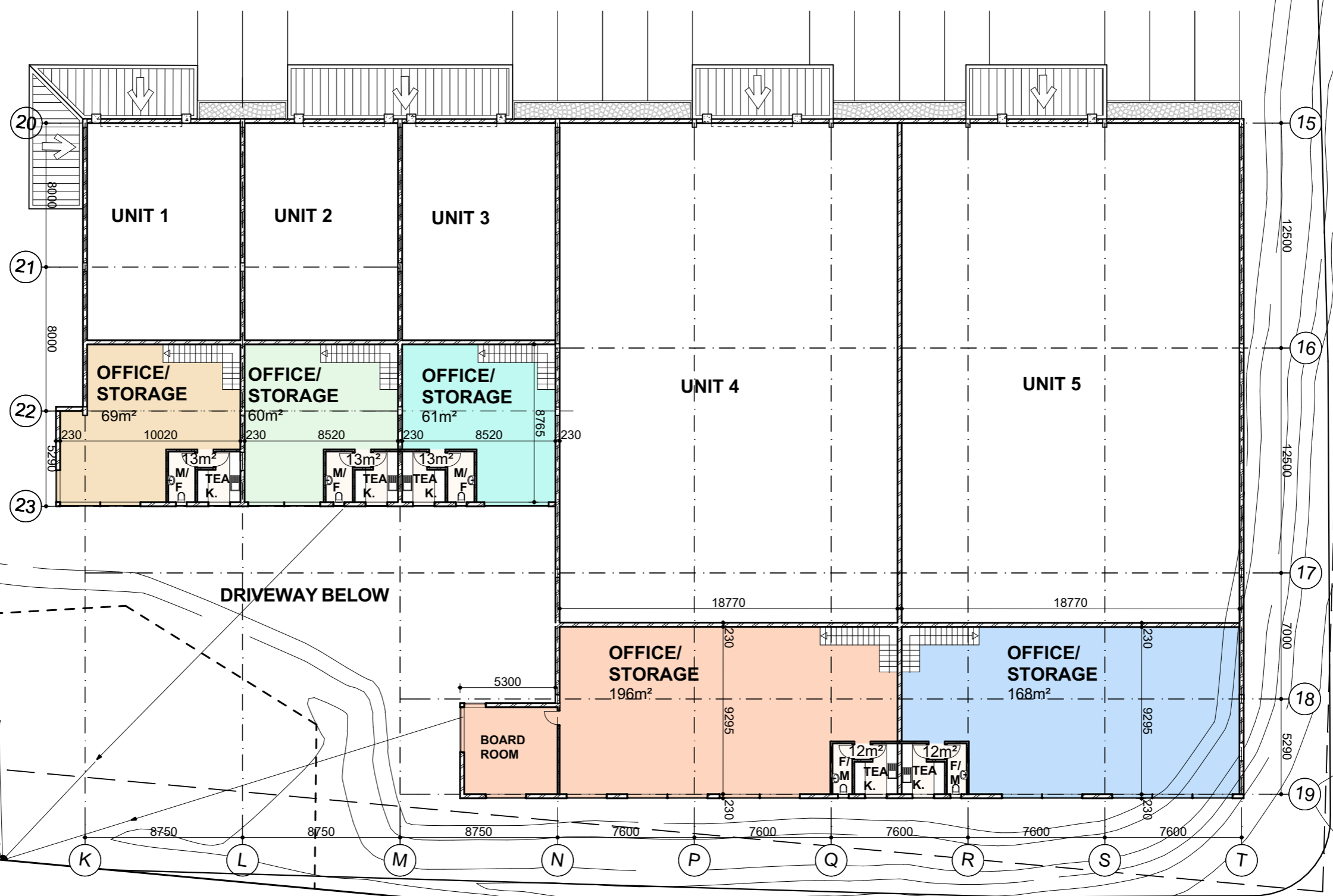
SECTION D - D

SCALE 1:500





DRIVEWAY BELOW



DRIVEWAY BELOW



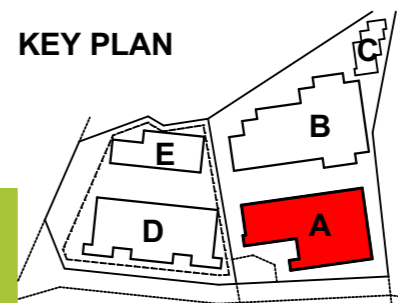
NICHOL PROJECTS

FIRST FLOOR PLAN - BLOCK A: UNIT 1-5
 SCALE: 1:250

PROPOSED NEW DEVELOPMENT - ERF 1589 & 1590
 SHAKAS HEAD INDUSTRIAL PARK

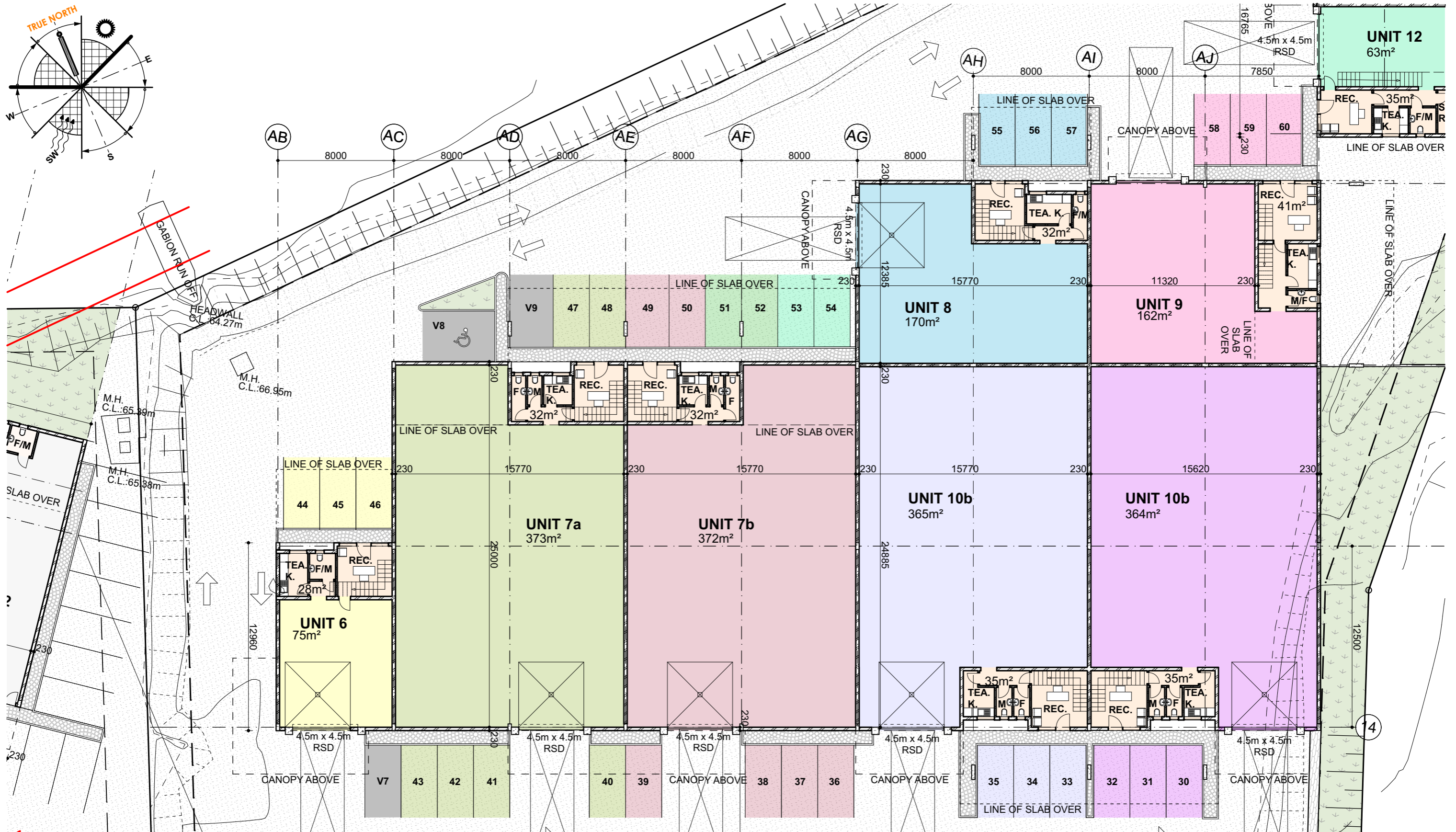
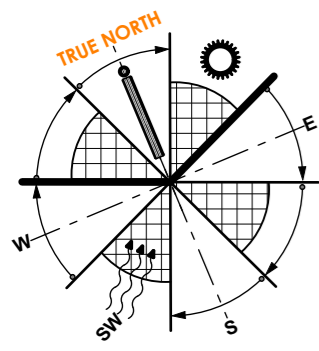
3018 006 SKETCH PLAN
 REV 8 - 16.05.2019

KEY PLAN



avid

www.avidarchitecture.co.za

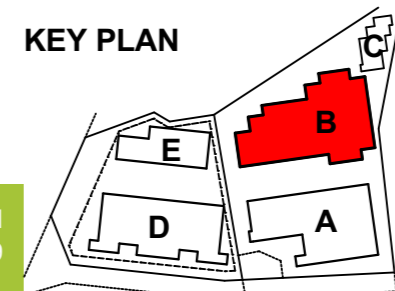


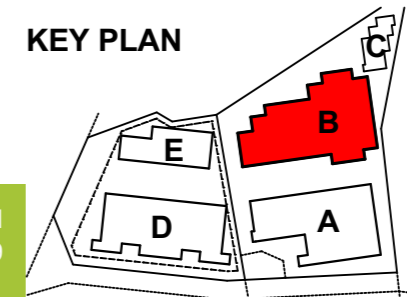
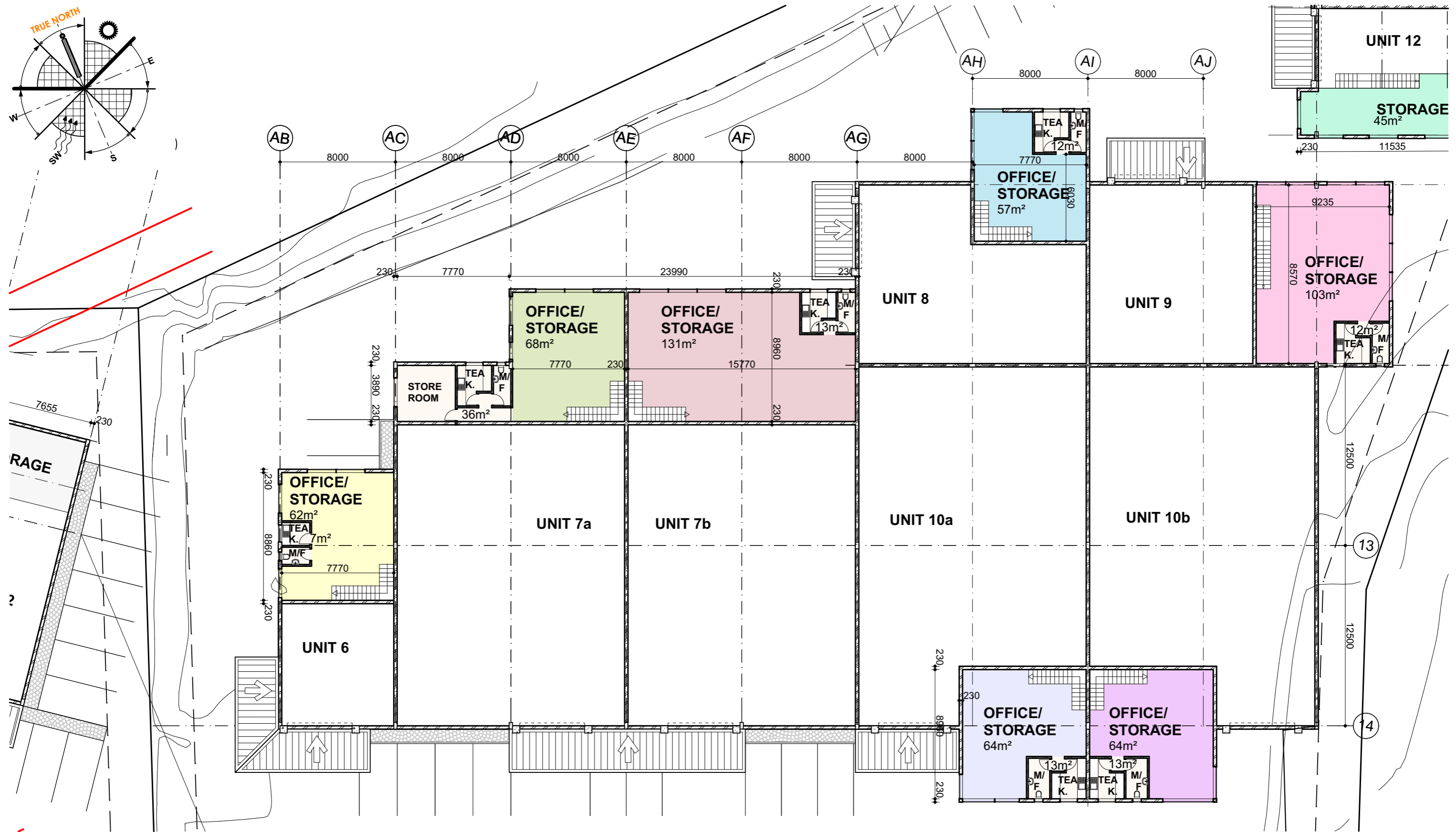
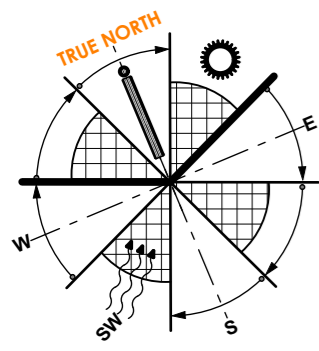
GROUND FLOOR PLAN - BLOCK B: UNIT 6-10
SCALE: 1:250

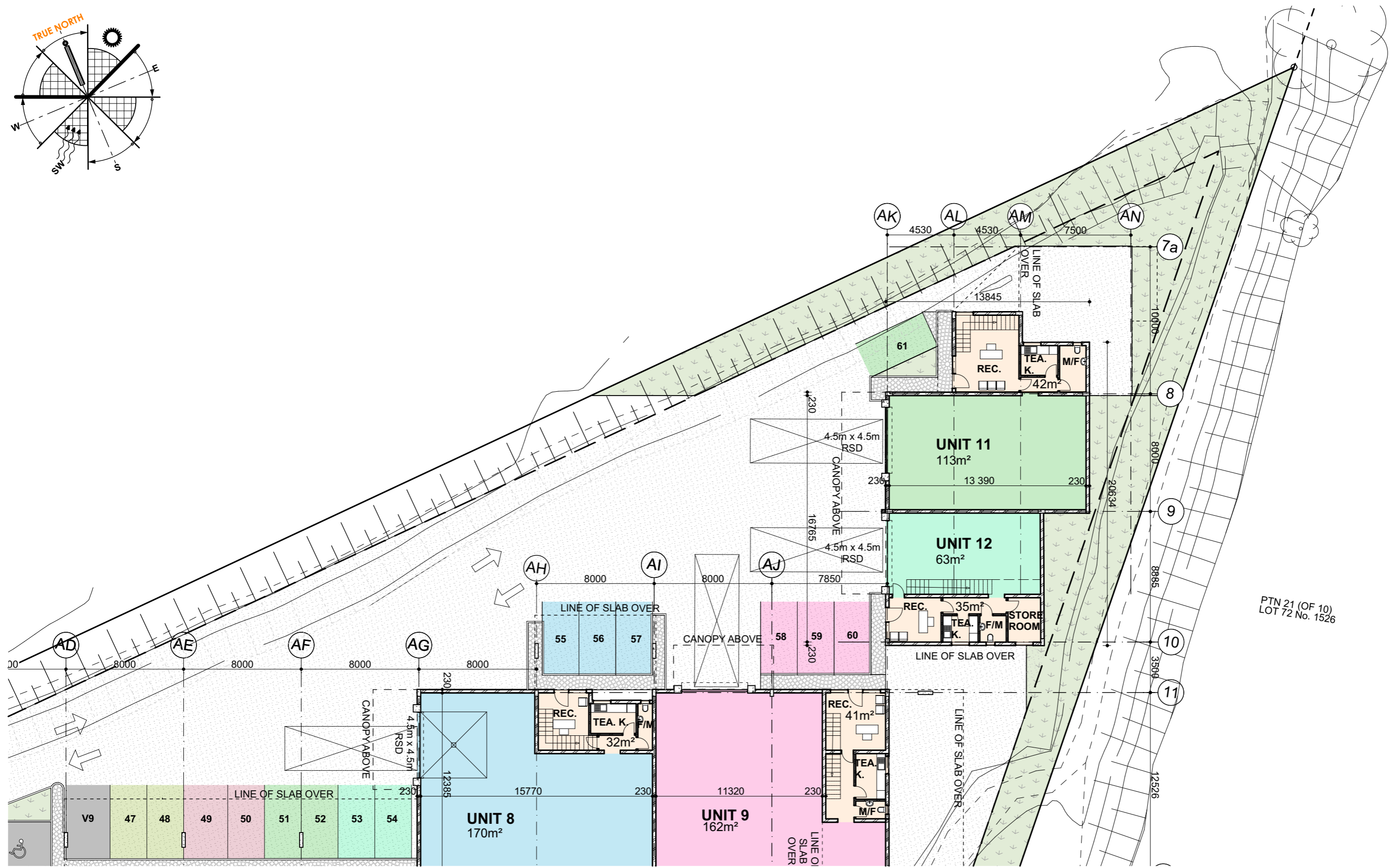
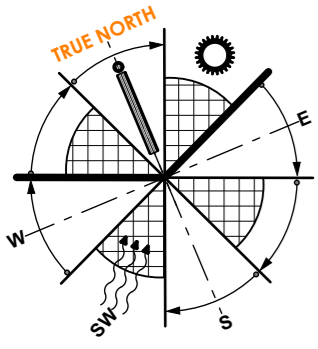
PROPOSED NEW DEVELOPMENT - ERF 1589 & 1590
SHAKAS HEAD INDUSTRIAL PARK

3018 007 SKETCH PLAN
REV 8 - 16.05.2019

KEY PLAN







PTN 21 (OF 10)
LOT 72 No. 1526



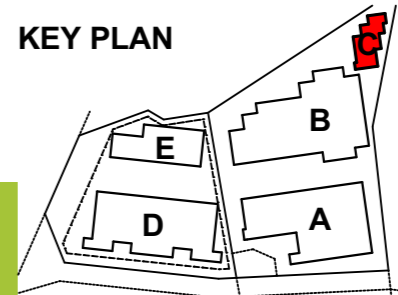
**NICHOL
PROJECTS**

GROUND FLOOR PLAN - BLOCK C: UNIT 11-12
SCALE: 1:250

**PROPOSED NEW DEVELOPMENT - ERF 1589 & 1590
SHAKAS HEAD INDUSTRIAL PARK**

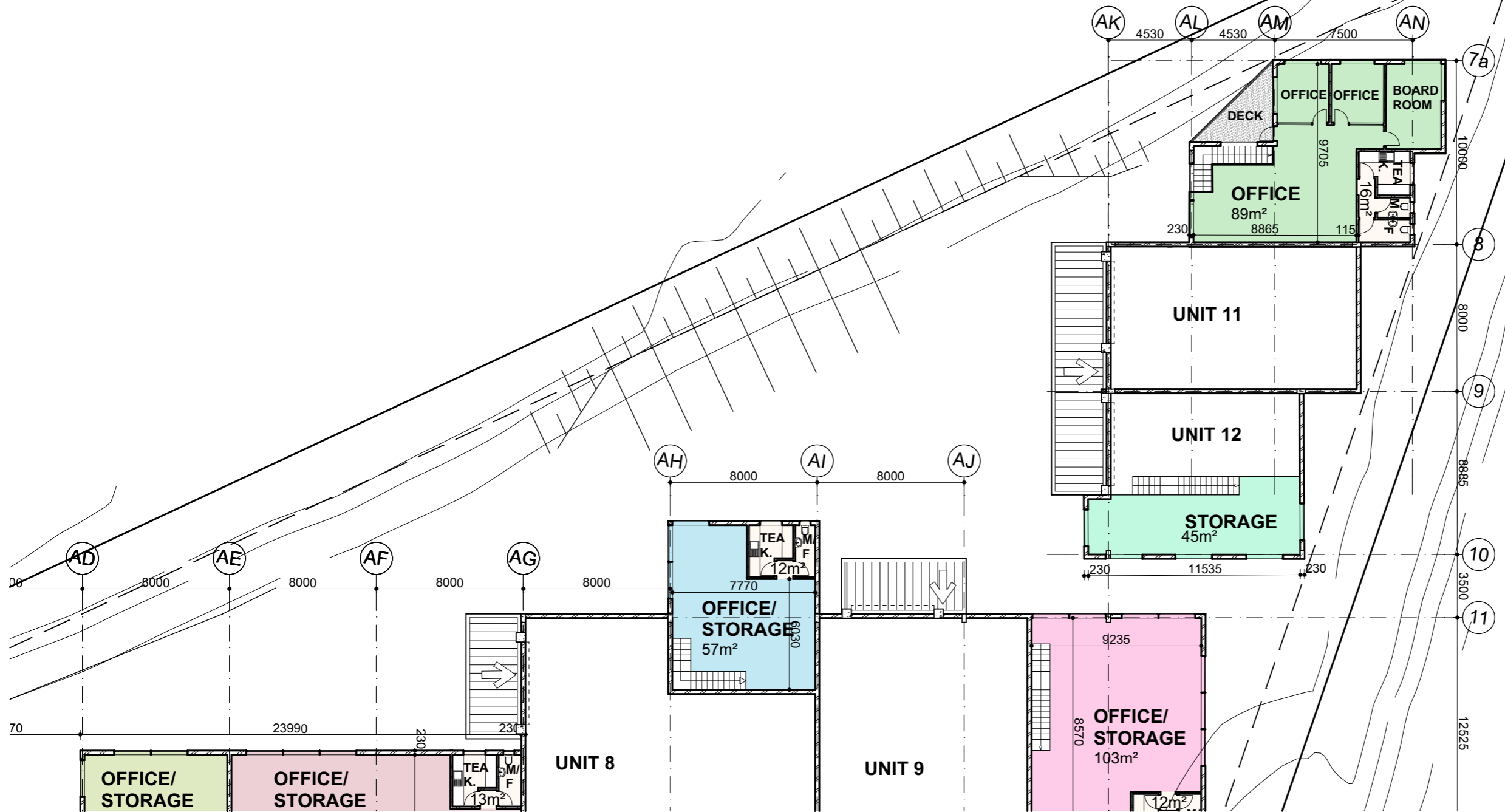
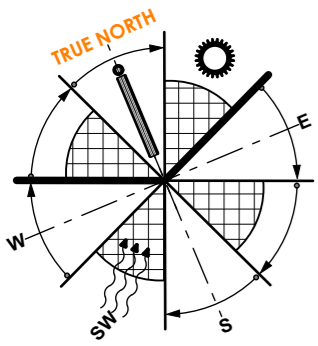
3018 009 SKETCH PLAN
REV 8 - 16.05.2019

KEY PLAN



aviol

www.avidarchitecture.co.za



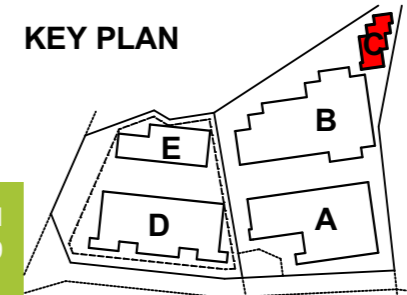
**NICHOL
PROJECTS**

FIRST FLOOR PLAN - BLOCK C: UNIT 11-12
SCALE: 1:250

**PROPOSED NEW DEVELOPMENT - ERF 1589 & 1590
SHAKAS HEAD INDUSTRIAL PARK**

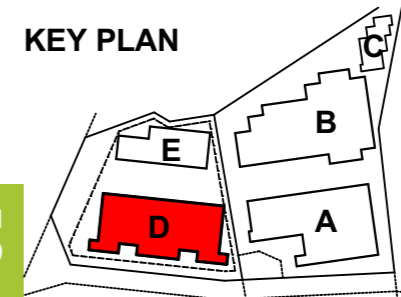
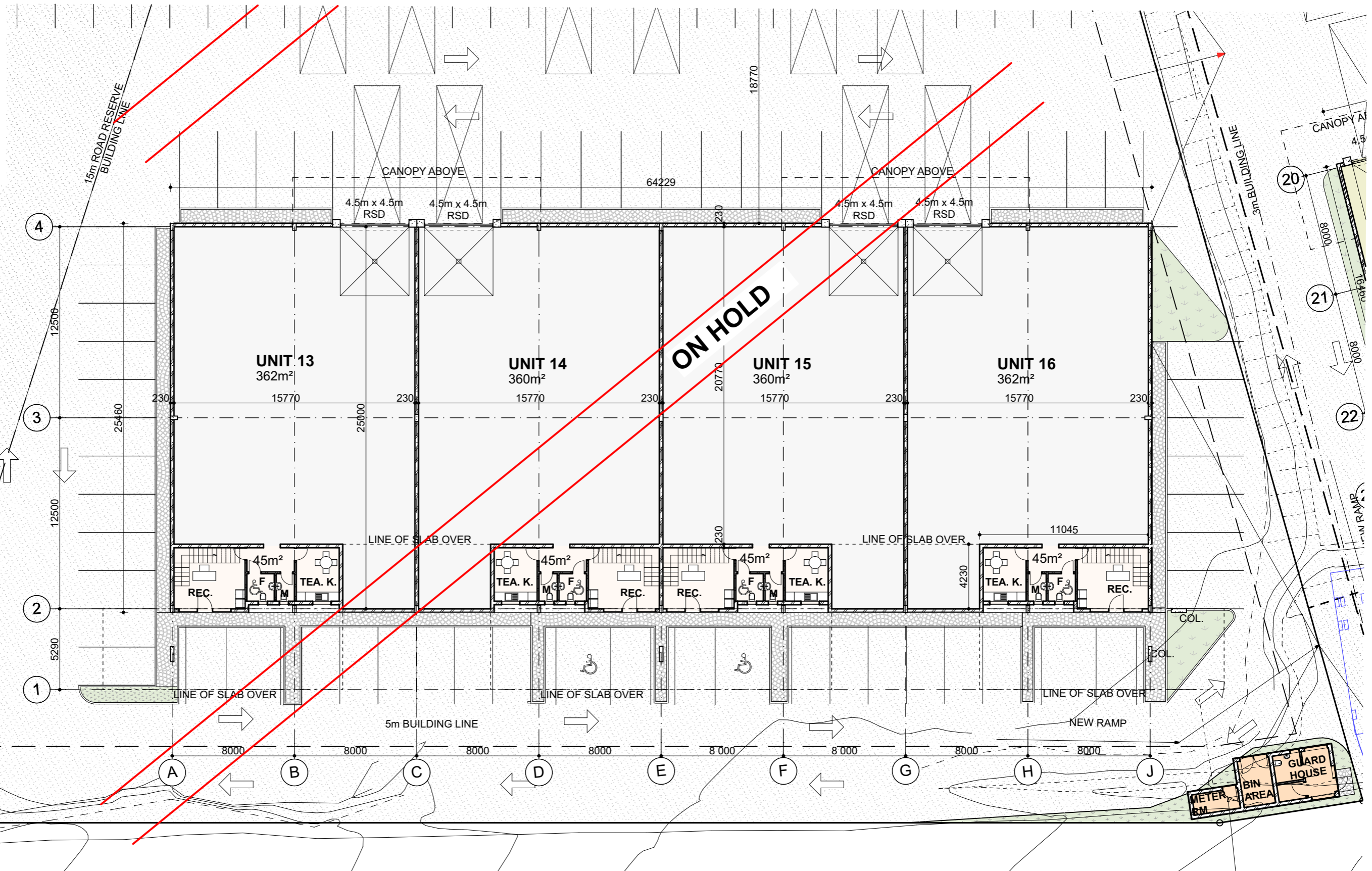
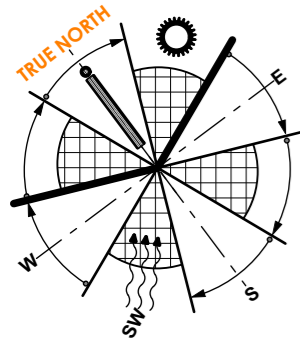
3018 010 SKETCH PLAN
REV 8 - 16.05.2019

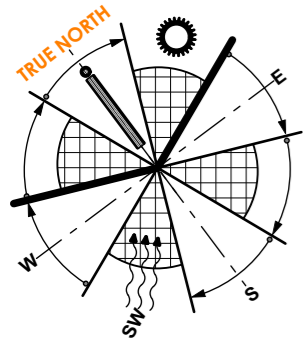
KEY PLAN



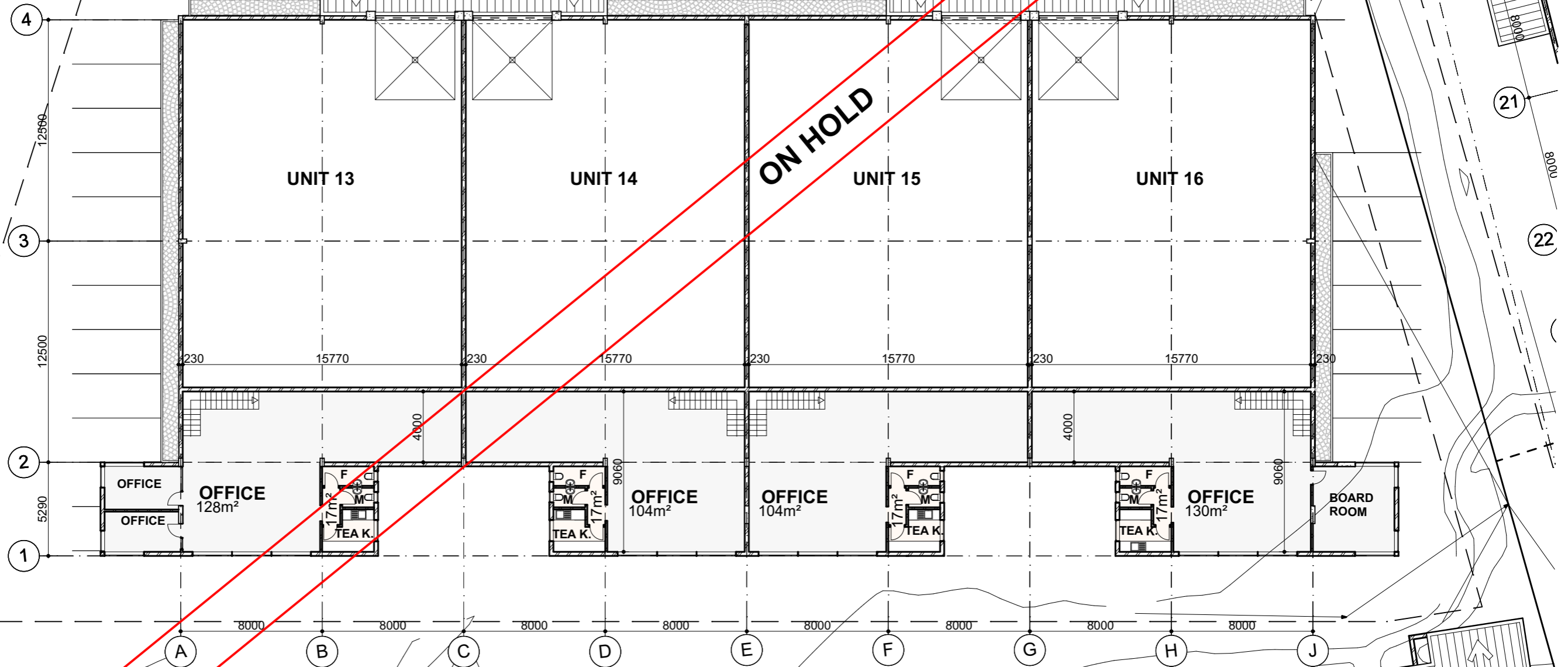
avid

www.avidarchitecture.co.za





DRIVEWAY BELOW

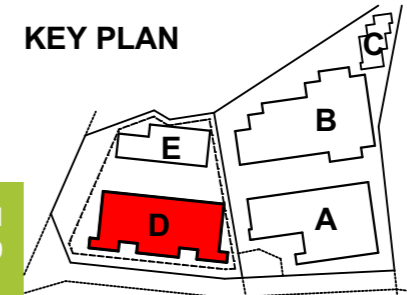


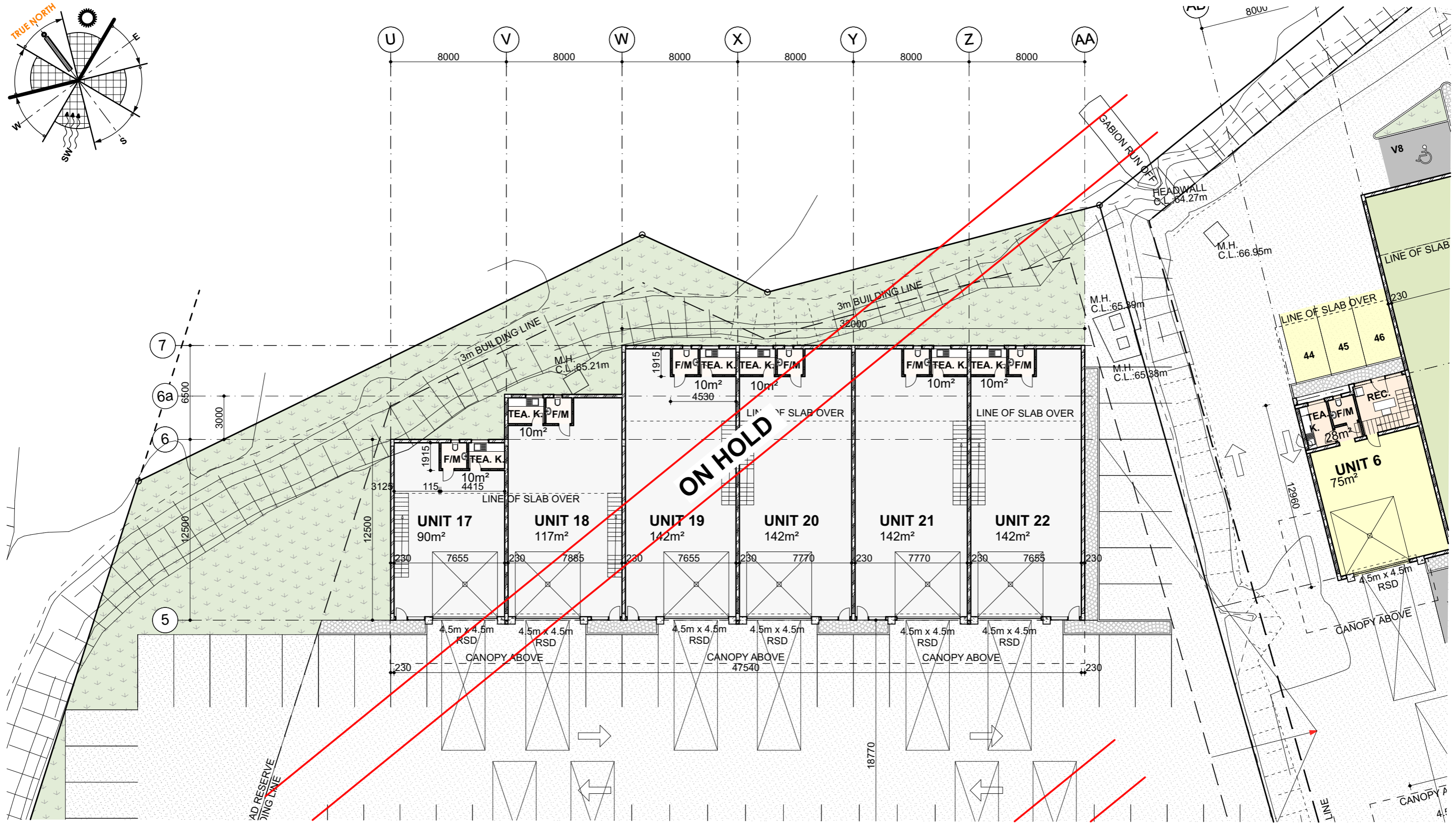
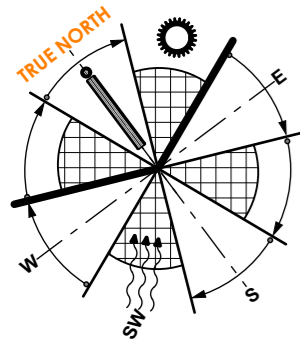
FIRST FLOOR PLAN - BLOCK D: UNIT 13-16
SCALE: 1:250

PROPOSED NEW DEVELOPMENT - ERF 1589 & 1590
SHAKAS HEAD INDUSTRIAL PARK

3018 012 SKETCH PLAN
REV 8 - 16.05.2019

KEY PLAN



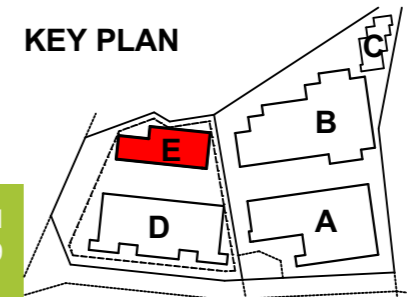


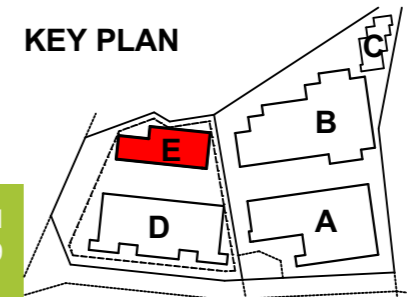
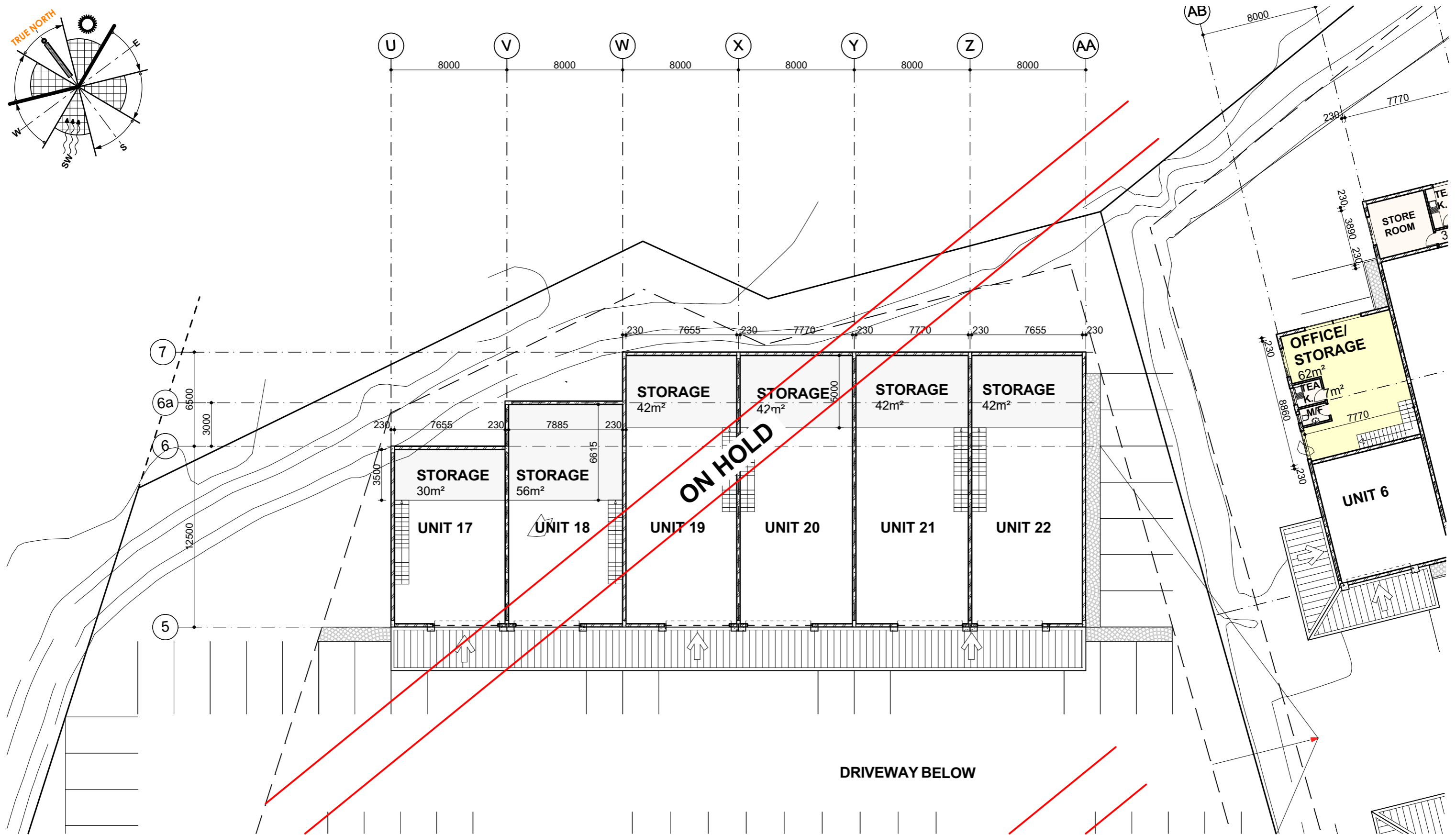
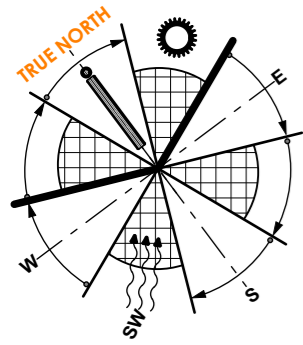
GROUND FLOOR PLAN - BLOCK E: UNIT 17-22
SCALE: 1:250

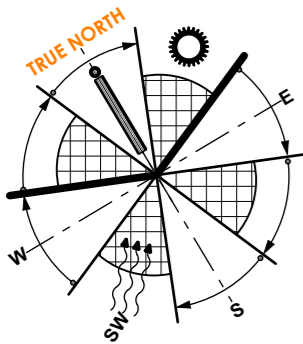
PROPOSED NEW DEVELOPMENT - ERF 1589 & 1590
SHAKAS HEAD INDUSTRIAL PARK

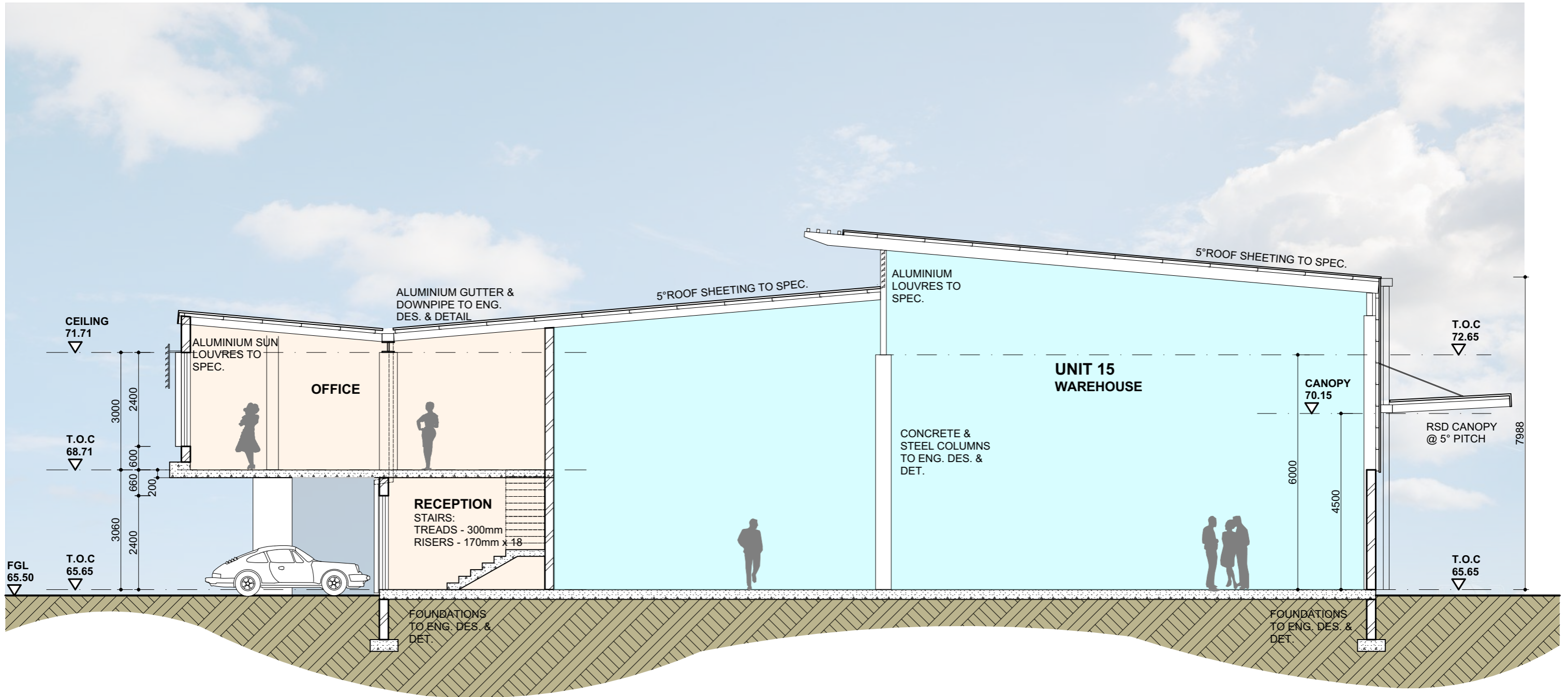
3018 013 SKETCH PLAN
REV 8 - 16.05.2019

KEY PLAN











3D VISUAL: MAIN ENTRANCE

**NICHOL
PROJECTS**

PROPOSED NEW DEVELOPMENT - ERF 1589 & 1590
SHAKAS HEAD INDUSTRIAL PARK

3018 017 SKETCH PLAN
REV 8 - 16.05.2019

avid

www.avidarchitecture.co.za





**NICHOL
PROJECTS**

3D VISUAL: BLOCK D: UNIT 15 - 16

PROPOSED NEW DEVELOPMENT - ERF 1589 & 1590
SHAKAS HEAD INDUSTRIAL PARK

3018 019 SKETCH PLAN
REV 8 - 16.05.2019

aviol

www.avidarchitecture.co.za





3D VISUAL: BLOCK A & B: WAREHOUSES

**NICHOL
PROJECTS**

PROPOSED NEW DEVELOPMENT - ERF 1589 & 1590
SHAKAS HEAD INDUSTRIAL PARK

3018 021 SKETCH PLAN
REV 8 - 16.05.2019

avid

www.avidarchitecture.co.za